

SENSO
PREMIUM
RIGID ACOUSTIC

1

AREA OF USE

2

SUBSTRATES

3

INSTALLATION

4

FIRST USE

5

MAINTENANCE

Residential use, temperature-regulated interior room + 8°C < T < + 60°C.

Loose laying is allowed as long as the ambient temperature is regulated and only if floor temperature never exceeds 60°C. If possibility of floor temperature >60°C, please contact Gerflor.

This floor covering cannot be laid on verandas.

IMPORTANT: The information in this document is valid from: 04/04/2024 and is subject to change without notice. In the face of continuous technical improvements, before starting any work, our customers should check with us that this document is still in force.

SENSO PREMIUM RIGID ACOUSTIC

1

2

3

4

5

AREA OF USE

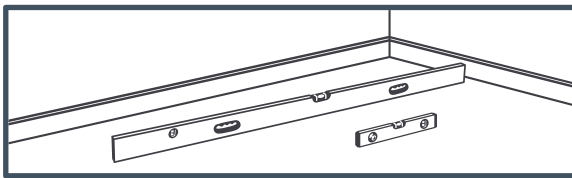
SUBSTRATES

INSTALLATION

FIRST USE

MAINTENANCE

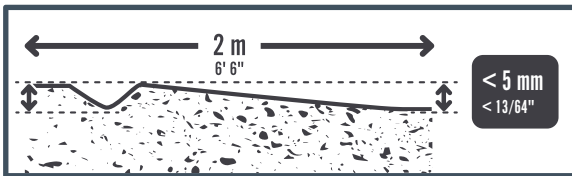
1. GENERAL



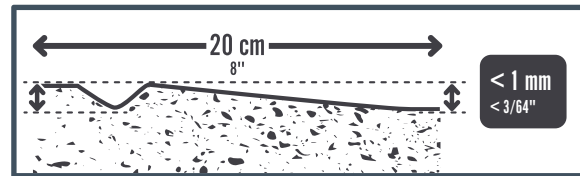
The flooring must be laid on a flat, clean, sound, dry and solid substrate.



The moisture content must not exceed 4% with a carbide moisture test.



The flatness tolerance must be < 5 mm under a 2 meters straight edge.



The substrate must not have any uneven areas > 1 mm every 20 cm.

2. RECOMMENDATIONS BY SUBSTRATE TYPE

Substrate

Conditions

Ceramic Tiles	✓	If joint < 8 mm width and < 3 mm depth. Otherwise, apply a grouting product or levelling compound to eliminate irregularities.
Concrete Floor, Painted Concrete, Levelling Concrete, liquid cement-based screed	✓	Substrate moisture content < 4%. If necessary, apply a levelling compound to eliminate any surface irregularities.
Anhydrite	✓	Substrate moisture content < 0,5 %.
Compact Vinyl	✓	If more than 10% is in bad condition, complete removal is necessary followed by application of levelling compound in case of surface irregularities.
Acoustic Vinyl , Carpet , Laminate	✗	Removal mandatory. If necessary, apply a levelling compound to eliminate any surface irregularities.
Wood (parquet/panels)	✓	If not glued, nailed onto spaced battens. If glued, removal mandatory. If the existing floor is too flexible, cover with 19 mm lining board and fix down.
Oriented Strand Board	✗	Cover with 19 mm lining board and fix down.
Water underfloor heating	✓	Reversible underfloor heating or underfloor heating with circulating water, max temperature 28°C.
Radiant electric underfloor heating	✗	Prohibited

SENSO PREMIUM RIGID ACOUSTIC

1

AREA OF USE

2

SUBSTRATES

3

INSTALLATION

4

FIRST USE

5

MAINTENANCE

1. BEFORE LAYING

All floor and wall coverings should be examined prior to installation for any visible defects.

To ensure colour uniformity, the floor covering laid in any one room should be from the same manufacturing batch, marked on the packaging.

The room temperature during installation must be between 10°C and 30°C.

The planks or tiles must be stored in the room for 24 h before installation.



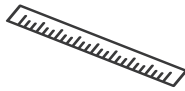
2. TOOLS



Utility knife



Tape measure



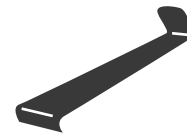
Metal Ruler



Non-rebound mallet



Cut-resistant gloves



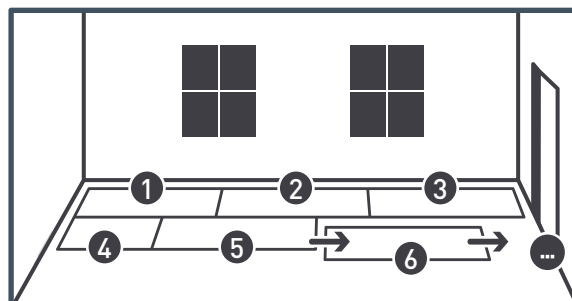
Pull bar



Tapping block

3. LAYING DIRECTION

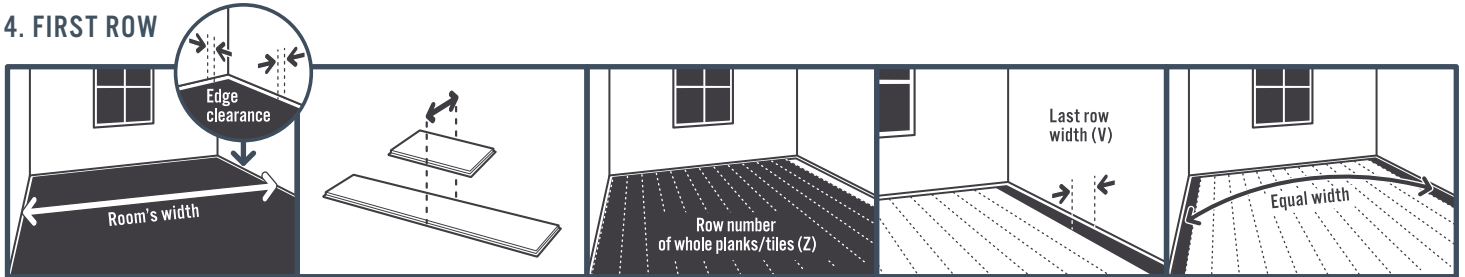
The planks / tiles must be oriented towards the wall with the main window, or lengthwise.



SENSO PREMIUM RIGID ACOUSTIC

1	2	3	4	5
AREA OF USE	SUBSTRATES	INSTALLATION	FIRST USE	MAINTENANCE

4. FIRST ROW



$X = \text{room's width} - (\text{edge} \times 2)$

$Y = X / \text{plank's width}$

$Z = \text{round } Y \text{ to the lower integer}$

$W = Y - Z$

$V = W \times \text{plank's width}$

$V / 2 = \text{size of the first and latest row}$

Example:

My room is 2 m wide, 2000 mm.

I know, I have to allow an edge clearance of 8 mm.

$X = 2000 - (8 \times 2) = 1984 \text{ mm}$

My plank is 20,4 cm wide, 204 mm.

$Y = 1984 / 204 = 9.72$

$Y = 9.72$
so $Z = 9$

$W = 9.72 - 9 = 0.72$

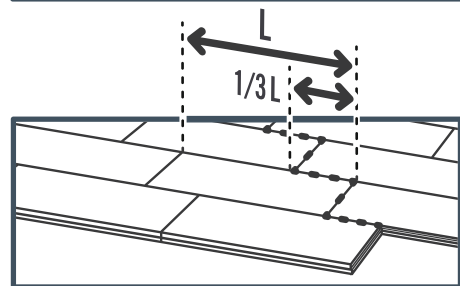
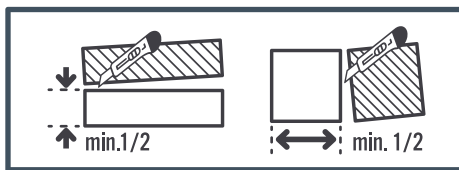
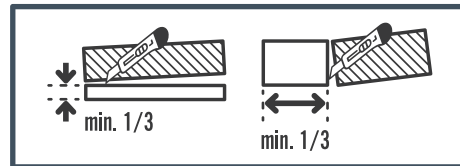
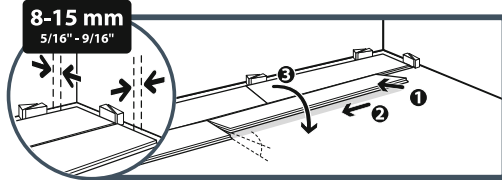
$V = 0.72 \times 204 = 146.9 \text{ mm}$

So, the width of the last row has to be 14.69 cm.

$146.9 / 2 = 73.45 \text{ mm}$

Or, the sizes of first and last row has to be 7.3 cm to be the same.

5. INSTALLATION



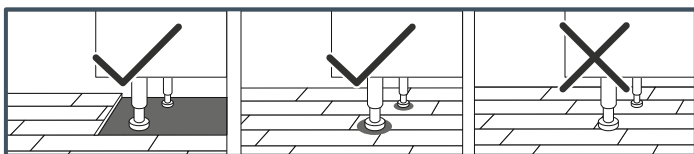
Start laying in a corner of the room. Move backwards as you lay, with the grooves facing towards you.

A minimum edge clearance of 8 mm should be left around the edge of the room, fixed objects and door thresholds.

For installation lengths over 8 linear meters, increase progressively the perimeter expansion gap up to 15 mm for 20 linear meters.

Planks must be offset by at least 25 cm, ideally 1/3 of plank.

Tiles must be offset by half.



Very heavy equipments (kitchen elements, shelves,...) should be installed before the flooring, and the edge clearance must be respected around the equipment's base or feet.

SENSO PREMIUM RIGID ACOUSTIC

1

AREA OF USE

2

SUBSTRATES

3

INSTALLATION

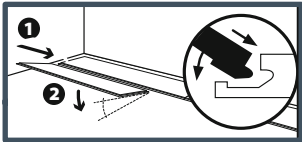
4

FIRST USE

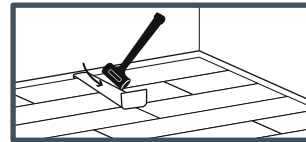
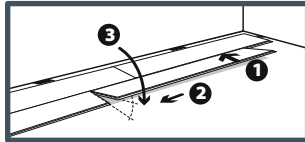
5

MAINTENANCE

6. ASSEMBLY

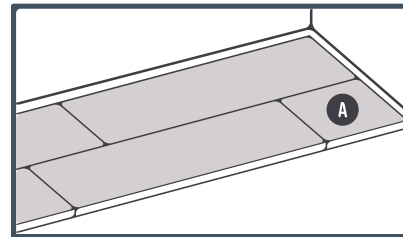
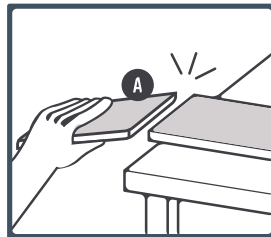
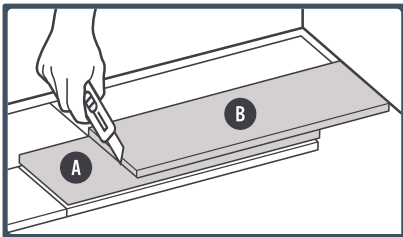


Start assembling the long edge, then move the tile towards the previously installed one, and assemble the short edges together.



To assemble the last row, use a pull bar and a non-rebound mallet.

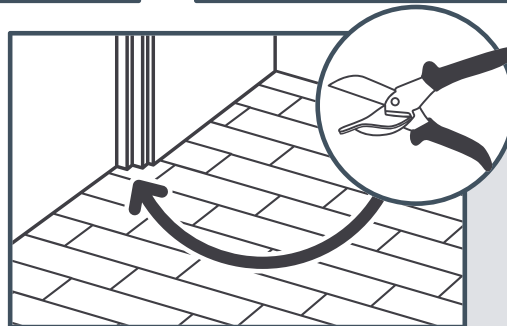
7. CUTTING AT THE END OF A ROW



- Cuts are made using a utility knife:
- With the straight blade, make one or more cuts along the surface of the plank.
 - Bend the plank / tile to snap it.

End of rows : length of planks/tiles >25 cm

Room edges : width > 1/3 plank or 1/2 tile



TIP: For cutting around door frame bases and areas which are difficult to access, use gripper shears.

8. LAYING RECOMMENDATIONS

In large rooms, planks/tiles should be ideally installed towards the length of the room.

In bathrooms we recommend applying a MS polymer sealant around the edges of baths and showers.

SENSO PREMIUM RIGID ACOUSTIC

1

AREA OF USE

2

SUBSTRATES

3

INSTALLATION

4

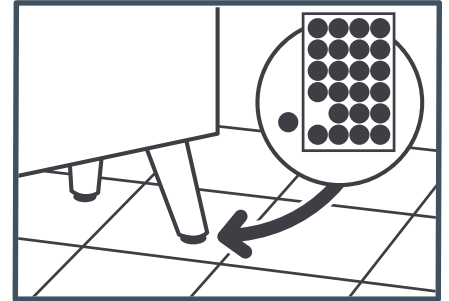
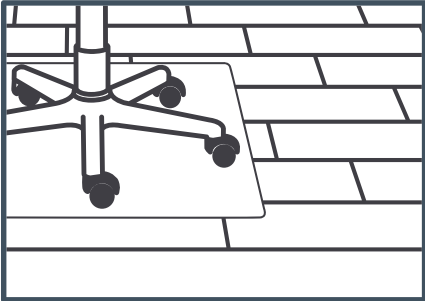
FIRST USE

5

MAINTENANCE

*The flooring can be used **as soon as it is laid.***

*Take precautions before use of heavy furniture and chairs with castors (felt caps or protective mats) –
Do not use rubber feet (risk of yellow/rust stains).*



1

AREA OF USE

2

SUBSTRATES

3

INSTALLATION

4

FIRST USE

5

MAINTENANCE

Cleaning your floor: vacuum cleaner or damp mop. Regular non-abrasive detergent.

Tough stains: diluted liquid bleach, white spirit, ethyl alcohol, or lemon juice.

Stubborn stains (ink, tomato, mustard, blood, beets, Mercurochrome): let diluted liquid bleach sit for several minutes, without rubbing. Rinse thoroughly. **Rust:** clean using a textile rust remover. Rinse thoroughly.

Grease, pen, felt pen: rub lightly with a cloth soaked in white spirit. Rinse thoroughly.

Maintenance precautions: do not use acetone or chlorinated solvents (e.g. trichloroethylene). Never use waxes or vitrifying varnish.

The Gerflor commercial warranty for domestic products is available at www.gerflor.com